

S·A·V news

FOCUS ON PACKAGED SOLUTIONS

Three Powerful Packages

SAV Valve Modules are specialists in the supply of tailor-made packaged commissioning and control centres for building services. Whether its hot and cold water, radiators, underfloor heating, or air conditioning SAV can supply a pre-tested plug and play solution that will be fast to fit and easy to operate.

① New SAV **Plumbing Module** provides a control centre for multiple domestic projects – apartments, sheltered housing units even hotel rooms. Units are tailored to the project and the individual unit and are supplied complete with manifolds and controls for potable water, radiators and/or underfloor heating in a compact housing.

② SAV's **Manifold Control Centres** with **Flow-Watch** have been purpose designed for modern warm water underfloor heating systems. Flow-Watch is a Fail/Safe auto shut down device that prevents excess temperature water entering the heating loops.



③ If it's fan coils, then you need SAV's unique **Commissioning Module** concept. Automatic operation and easy integration with BMS are among the unique features of the latest SAV 767 "boxed" models.



Plumbing Module is Pre-packaged Pre-tested and Ready To Roll

SAV's new Plumbing Module pre-packaged control centre for plumbing and heating services is the long awaited cure for an old headache.

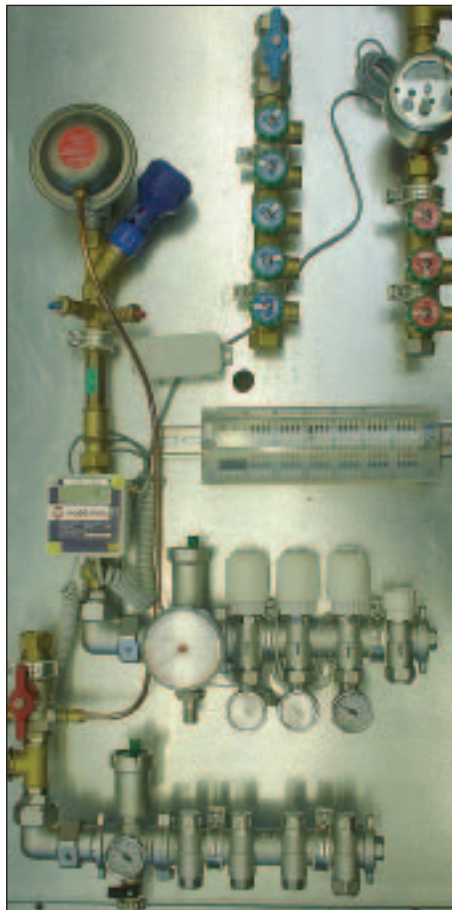
At long last there's no need to plumb out complete individual potable water and heating systems for individual domestic systems in apartment blocks, hotels etc.

The Plumbing Module is supplied custom-tailored to the project and the individual area complete with all the manifolds and controls needed for potable water, radiators and/or underfloor heating. Components can be pre-assembled on a steel back plate for discreet location in a suitable cupboard, or, if good looks are important architect and designers can opt to have everything housed in a stylish, compact, steel box - available in a range of sizes to meet all requirements.

"Everything" is no exaggeration. Each SAV Plumbing Module can be built up to accommodate hot and cold water distribution and radiator manifolds with all necessary controls as specified. Underfloor heating manifolds and actuator control heads can also be accommodated for both stand-alone and mixed systems.

Haka Alupex

Although the Plumbing Module has been developed for use with Haka Alupex the



premier composite polyethylene and aluminium pipe, it is compatible with virtually any type of flexible plumbing and heating pipework. All units feature fixed pipe centres.

Special Plumbing Module units with integral energy meters and differential pressure control valves can be supplied for localised group heating schemes sharing a central boiler plant. This type of system is increasingly popular for inner city luxury apartment blocks where both efficient distribution and accurate data recording are vital – see package *The Ultimate Solution*.

Whatever the configuration, all SAV Plumbing Modules are delivered fully assembled and pressure tested ready for simple installation. Some contractors prefer to carry this out in stages for maximum convenience – wall mounting the space-saving Plumbing Module in its discreet location as a first fix and only making the simple flow and return connections when water is ready to flow.

As the project enters its final phase, plumbing and heating services can be balanced and commissioned from the Plumbing Module, which also serves as a secure control and isolation centre to simplify maintenance and repair throughout the life of the system.

MultiFAR - Europe's First Choice Manifold System

Versatile solution for sanitation and plumbing systems now available in the UK

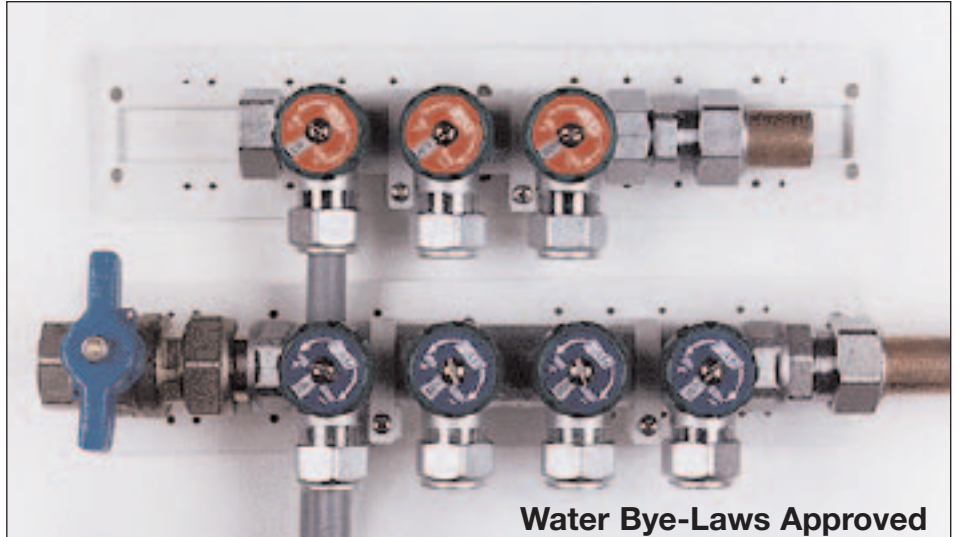
FAR is Italy's leading manufacturer of manifold based distribution systems for heating and domestic services. The advantages which the manifold approach in terms of reduced installation time, space saving and easy maintenance make the FAR range a first choice solution throughout Continental Europe. Now SAV is spreading the news of those advantages here in the UK. Consultants, contractors and clients have all been quick to appreciate the benefits and there are already hundreds of successful applications - in hotels, offices, leisure centres, hospitals, schools and homes right across the country.

Special Connecting System

FAR is more than just another range of manifolds. The special MultiFAR connecting system with dedicated inserts for leak-free material match mean that the manifolds will accept copper, multi layer, or any other type of flexible oxygen barrier pipe from 10-20mm. These inserts - unique to FAR - are so effective in use, that even connections with mixed pipes are possible, provided the correct insert is selected for each type.

MultiFAR bodies will accept copper or flexible pipework with equal ease.

MultiFAR manifolds can be used with all types of pipe from 10-20mm diameter and mean an end to the need for elbows, T's and other concealed



Water Bye-Laws Approved

joints for total, leak-free security. Should it ever be required, any section of pipe can be isolated and replaced with minimum disruption to the system.

MultiFAR manifolds can be used with all types of pipe from 10-20mm diameter and mean an end to the need for elbows, T's and other concealed joints for total, leak-free security.

Manifolds can be built up in modules to achieve the number of ports required for each location.

The new 4-port version of the popular MultiFAR manifold design, for example, is ideal for application in sanitation and plumbing systems. It will serve four

feed pipes and yet is compact enough to be tucked away in any convenient location. No matter how tight the space, the FAR system allows easy identification of all connections to baths, showers, WC's, bidets etc and easy isolation and flow adjustment can be made at the manifold without the need for special tools.

The new 4-Port MultiFAR design requires only six simple connections and can be neatly installed almost anywhere, with easy access for future adjustment and maintenance of the system. Remember - minimising on site connections save time and money. MultiFAR 4-Port manifolds are designed for operating temperatures up to 100°C and operating pressures up to 10 bar.

PEACE OF MIND PLUMBING

These pictures tell the story of how FAR's unique approach to manifold design offers real "peace of mind" plumbing.

Compare these two approaches to manifold design. On the left is a typical on-site construction of brass and copper with mini ball valves. It requires no fewer than fifteen individual connections! The purpose designed and manufactured FAR unit at top right

offering a major saving in installation time and on-site cost. You'll notice that the FAR unit is much more compact too. It can be neatly installed almost anywhere, while always ensuring easy access for future adjustment and maintenance of the system.

List Price £20.96



Typical List Price £32

Fast And Efficient Connections

For New Docklands Centre

ExCel in the heart of London's Docklands is the capital's major new exhibition and conference centre. A huge range of facilities is available within the 90,000 m² ExCel pavilion just to stone's throw from Canary Wharf - to accommodate everything from a board meeting of eight directors up to an international exhibition attracting thousands of visitors.

Restaurants and bars are available to refresh the visitor and a hotel and nightclub will soon be joining the on site attractions.

Behind the scenes MultiFAR manifolds distribute hot and cold water services to the 600 washbasins located throughout ExCel.

Gary Leek of mechanical and electrical

contractors Drake and Skull explains how the MultiFAR approach saved valuable on site time.

MultiFAR manifolds improved our installation time. Fewer connections were needed as the manifolds have all the valves already connected. The manifolds were ideal for use with flexible pipes.

Hep2O pipework was used at ExCel for connections from the manifold to the hot and cold outlets. MultiFAR manifolds are ideal for use with this and any other type of flexible pipe. The special connecting system with dedicated inserts for leak-free

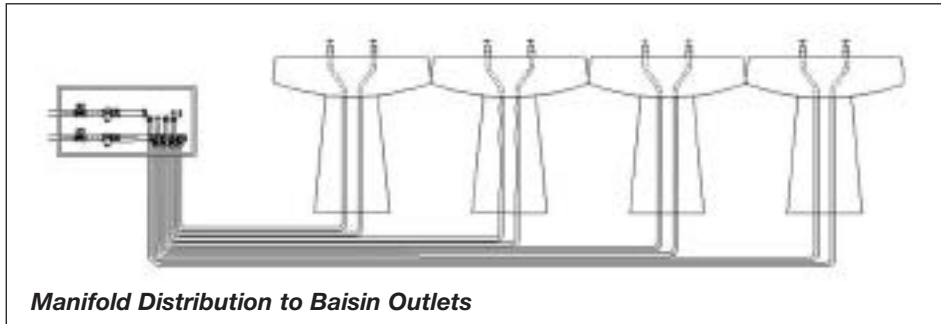


The New ExCel Pavilion

material match mean that the manifolds will accept copper, plastic, multi-layer, or any other type of flexible oxygen barrier pipe from 10-20mm. These inserts - unique to FAR - are so effective in use, that even connections with mixed pipes are possible, provided the correct insert is selected for each type. At ExCel mains flow to the manifolds is in copper.

Both 3 and 4-Port MultiFAR manifolds were used in the ExCel project with two or three manifolds been used in some of the larger installations - the longest row of washbasins at ExCel is 10 units.

Discreet invisibility was ensured by the locating the manifolds behind the access panels of the vanity units.



Manifold Distribution to Basin Outlets

BSRIA HOTEL STUDY CONFIRMS MAJOR TIME SAVINGS FROM MANIFOLD APPROACH

A major new study reveals that use of a manifold system in association with flexible pipework for hot and cold water services can save up to 42% in installation time.

The study, carried out by experts from the Building Services Research and Information Association (BSRIA), focused

on the application of FAR manifolds for hot and cold water distribution as part of the refurbishment of the 119 bedroom Thistle Hotel in Middlesbrough.

The results of this case history are now published as part of the BSRIA series of data sheets on Innovative M & E Installation. It reports that the simplified installation techniques involved can achieve significant reductions in both cost and labour time when compared with traditional methods.

Manifold distribution was selected for the Thistle Hotel project to overcome the problem presented by extremely congested services risers. Bathrooms on each floor are arranged in back-to-back pairs with MultiFAR manifolds, equipped with Cimberio ball valves as isolation points, supplying three cold and three hot water lines to each bathroom. A separate two-port manifold section - once again, equipped with a Cimberio isolation valve - supplies each pair of toilets. Pipework for the project comprises GF Instaflex polybutylene for the main risers and Hep2O for the small bore distribution to each of the outlets.

MultiFAR manifolds can be used with

all types of pipe from 10-25mm diameter and mean an end to the need for elbows, T's and other concealed joints for total, leak-free security. Should it ever be required, any section of pipe can be isolated and replaced with minimum disruption to the system.

The BSRIA study found that the system developed for the Thistle Hotel required fewer pipe connections and because pipe connections were localised at the manifold, easier maintenance would result. The system was also considered ideal for concealed pipe-in-pipe distribution.

The use of flexible pipework makes connections at the manifold quick and easy and because it is possible for the manifolds to incorporate isolating, control valves and flow measurement devices, they require much less space.

Although manifold systems may require more pipe than the traditional approach, the saving in installation time more than compensates.

Mechanical and electrical consultants for the Thistle Hotel project are Ove Arup & Partners and M & E contractors are N.G. Bailey & Company.



FAILSAFE CONTROL FOR UNDERFLOOR HEATING

Fully pressure tested prior to delivery and ready to assume command of the underfloor heating system as soon as flow and return connections are made, SAV's new Manifold Control Centres offer designers and installers a number of distinct advantages.

These include: 8-turn commissioning on the flow manifold, which can be factory preset, automatic airvent and temperature commissioning as standard. A range of 2-12 port, 1inch and 1 1/4inch bodies is available to meet virtually any application requirement and manifolds can be supplied complete with flow gauges

Should the system be extended at any time the modular design makes it easy to incorporate the new circuitry.

Electrical features are equally comprehensive. They include: easy plug-in wiring with no need for tools, "light when right" LED'S which permit trouble shooting

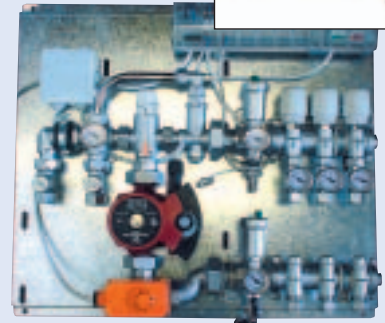
from the wiring centre. Units are easily upgradeable to RC control.

Key feature of the compact SAV system is a Fail/Safe auto shut down device known as Flow-Watch, which prevents excess temperature water entering the heating loops.

A safety relief on the manifold's primary pump protects the mixing valve against sudden injections of high temperature water. Should the mixing valve itself fail, an independent thermostatic control on the flow line will automatically shut down the system.

SAV also utilises a new mixing valve configuration specially designed to speed up response from the floor heating system. When the boiler starts up, no mixing is permitted until the main flow temperature reaches the preset limit. Achieving full comfort conditions is quicker, while safety is ensured by the added security of Flow-Watch.

There's even a cased option for control in real style!



The SAV ZoneMaster package is delivered already pressure tested, pre-wired and mounted on a backing plate ready for easy on site installation.

SAV Commissioning Modules Provide Remote Control at The Riverside

SAV's Commissioning Module concept, which has revolutionised the way building services systems are connected and controlled.

Although Commissioning Modules can be used with a complete range of terminal units from radiators and convectors to chilled beams and panels and even air handling units, the major benefits lie with fan coil units which now account for a large share of the UK air conditioning market.

A single SAV 767 Commissioning Module can control the heating or cooling connections to up to six fan coils from one, easily accessible location.

Key features of the system include:

- **faster, cheaper installation**
- **optimum flow control**
- **simpler, less frequent maintenance**

The system is a popular choice for prestige project like Albion Riverside - 11 storey apartment building on the river Thames between the Albert and Battersea bridges.

Designed by Foster & Partners with Ove Arup & Partners appointed as building services consultants Albion Riverside comprises a total of 183 fully furnished, one to four bedroom apartments and 14 penthouses.



Air conditioning is supplied via more than 600 fan coil units. Commissioning was carried out with the aid of SAV Commissioning Modules, each of which house the controls for a group of fan coils in an enclosure located in the hallway ceiling. The system also incorporates all the components necessary to flush, vent and balance the fan coil units without the time consuming "looping out" procedure. Forward and back flushing can be easily achieved foreither the entire system or individual cooling lines.

The latest 767 version of the Commissioning Module has all its key components including multi-port manifold, air vent and isolation valves already housed in a pre-insulated galvanised steel casing.

...and finally the ultimate solution

Legislation now demands *real* energy saving. Designing group systems with central pumping plant – common scenarios in hotels, sheltered housing units and some apartment blocks –

means utilising variable flow water systems.

However, overcoming high shut off pressures and poor control authority with powerful actuators, balancing valves and differential pressure control valves (DPCV's) can cancel out potential savings by bumping up cost of equipment and installation.

SAV's versatile Plumbing Module concept can be extended to include a DPCV . which serves the "mini" system. Energy meters can also be incorporated for accurate data recording for efficiency monitoring or account preparation.



For further information contact:

**SAV VALVE MODULES, SCANDIA HOUSE, 131 ARMFIELD CLOSE,
WEST MOLESEY, SURREY KT8 2JR
TEL: +44 (0)20 8941 4153 FAX: +44 (0)20 8783 1132
WEB: www.savmodules.com E-MAIL: info@savmodules.com**

S·A·V
VALVE MODULES